

# centrick

0121 347 6116  
centrick.co.uk

JQ1, George Street, Birmingham  
£210,000

1  1  1 



A stunning one bedroom apartment located in JQ1 on George Street. The apartment offers one large open plan living room / kitchen, a generous double bedroom, well maintained bathroom and ample storage in the hallway. The apartment benefits from an abundance of natural light, thanks to the large windows in the living room and bedroom, both offering access to the outside space. The apartment has two parking spaces, which come in the form of a tandem parking space.

JQ1 is located on George street, just minutes away from St Pauls Square in the heart of the Jewellery Quarter. With ease of access to the Jewellery Quarter train station, tram station and New street station.

...



## Key Features

- Spacious one bedroom apartme
- Open plan living room / kitchen
- Balcony
- Incredible Jewellery Quarter loca
- Two parking spaces
- Top floor

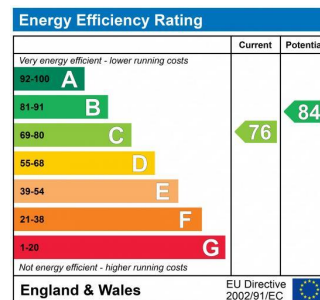
Tenure: Leasehold

Council Tax Band – B

Service Charge – £1,700.00

Ground Rent – £100.00

Lease – 120 Years Unexpired





# centrick

0121 347 6116  
centrick.co.uk

JQ1, George Street, Birmingham  
£210,000

1  1  1 



A stunning one bedroom apartment located in JQ1 on George Street. The apartment offers one large open plan living room / kitchen, a generous double bedroom, well maintained bathroom and ample storage in the hallway. The apartment benefits from an abundance of natural light, thanks to the large windows in the living room and bedroom, both offering access to the outside space. The apartment has two parking spaces, which come in the form of a tandem parking space.

JQ1 is located on George street, just minutes away from St Pauls Square in the heart of the Jewellery Quarter. With ease of access to the Jewellery Quarter train station, tram station and New street station.

Maximum dimension:

Hall 5' 6" x 9' 1" ( 1.68m x 2.77m )

One wall mounted radiator, intercom, recess lighting

Store 6' 8" x 4' 4" ( 2.03m x 1.32m )

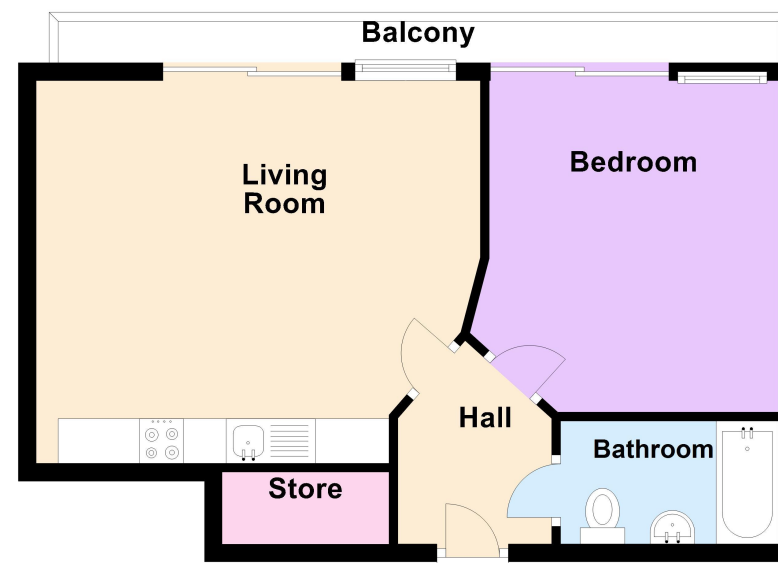
Bedroom 11' 8" x 15' 1" ( 3.56m x 4.60m )  
built in wardrobe, door to balcony

Kitchen/living Room 16' 4" x 17' 1" ( 4.98m x 5.21m )

Front facing double glazed window, one wall mounted electric heater, small balcony, Fitted Kitchen, electric oven, electric hob, built in dishwasher, fridge and freezer, recess lighting

## Ground Floor

Approx. 0.0 sq. metres (0.0 sq. feet)



Total area: approx. 0.0 sq. metres (0.0 sq. feet)

Sell or let with  
centrick

Get a free, in person valuation from our  
experts today